

POLICY NO.61 – Hand Hygiene Policy

REV: 03 DATE: 10.08.2022

Sample Policy Statement

Scamps & Scholars aims to keep children happy and healthy by supporting the children to understand the importance of hand washing. This policy is underpinned by the Childcare (Preschool Services) Regulations 2016. Good hand hygiene is the most effective way of preventing transmission of Infection, and staff will support children in using the proper technique for hand washing (see below).

Overview

- Hand washing facilities are available in each childcare room, toilets, nappy changing areas, food preparation areas and cleaning areas and a number of hand basins externally around the building.
- Children can avail of the hand washing facilities when they need and they will be encouraged and supported to practice this new skill. (see hand washing poster)
- Wash hand basins should have hot and cold mixer taps that are thermostatically controlled to ensure that hot water is no hotter than 43° to avoid scalding and facilitate hygienic hand washing.
- Staff will encourage children to wash their hands after using the toilet, before eating any food and after playing outside. Guidelines on hand washing are displayed in the Service.
- These guidelines incorporate visual images that are appropriate for staff and children (see posters below).



Staff must wash their hands before the following:

- The start of the work shift
- Eating, handling/preparing food or assisting/feeding a child;
- Preparing meals, snacks and drinks (including infants' bottles)
- And inline with infection control & pandemic policies

Remember

- Hands are washed with warm water and liquid soap.
- Cuts are covered with water proof plasters.
- A hand cream is used to protect staff skin.
- Nails of staff are clean and short.
- Alcohol hand rubs are useful, but they will not kill germs that cause diarrhoea.
- Do not wear jewellery on hands, a plain wedding band is acceptable.
- Nail polish is not acceptable.
- Liquid soap dispensers are utilised within the Service.
- Dry hands properly with paper towels.

Hand Washing process

- Hand washing should be performed as follows:
- Wet hands under warm running water to wrist level
- Apply liquid soap. Lather it evenly covering all areas of the hands for at least 10 seconds. Include the thumbs, finger tips, palms and in between the fingers, rubbing backwards and forwards at every stroke (see posters below)
- Rinse hands off thoroughly under warm running water
- Dry with paper towel using a patting motion to reduce friction, taking special care between the fingers
- Use the disposable paper towel that has been used to dry the hands to turn off taps
- Dispose of the disposable paper towel in a waste bin using the foot pedal to avoid contaminating hands that have just been washed

APPROVAL DATE: _____

IMPLEMENTATION DATE: _____

SIGNED: _____
(On behalf of the Board of Directors)

Hand-washing technique with soap and water



Wet hands with water



Apply enough soap to cover all hand surfaces



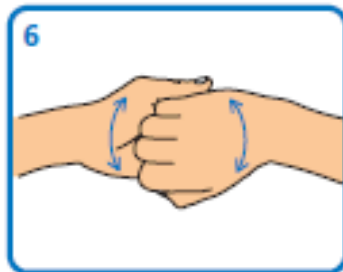
Rub hands palm to palm



Rub back of each hand with palm of other hand with fingers interlaced



Rub palm to palm with fingers interlaced



Rub with back of fingers to opposing palms with fingers interlocked



Rub each thumb clasped in opposite hand using a rotational movement



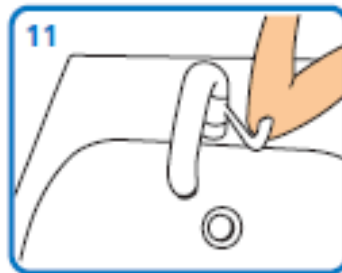
Rub tips of fingers in opposite palm in a circular motion



Rub each wrist with opposite hand



Rinse hands with water



Use elbow to turn off tap



Dry thoroughly with a single-use towel



Hand washing should take 15–30 seconds